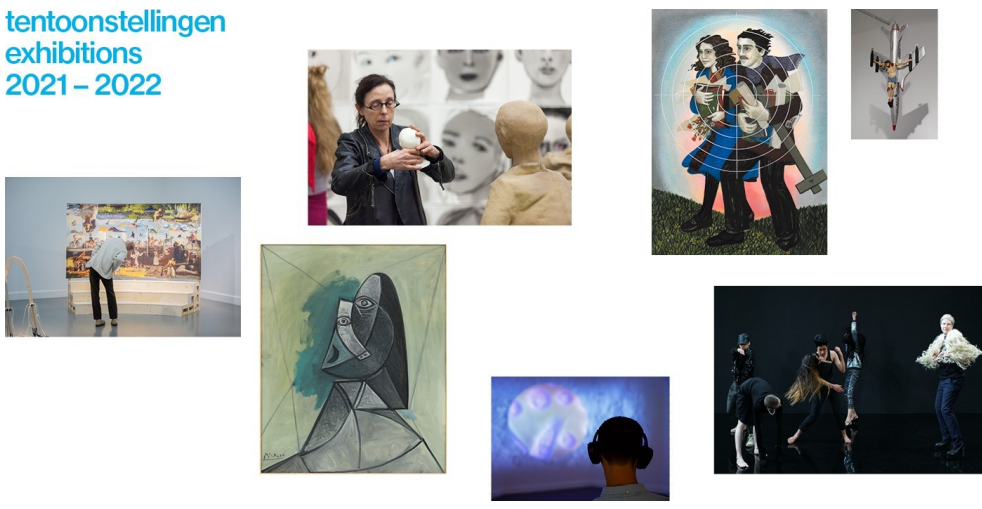


persbericht press release

tentoonstellingen exhibitions 2021 – 2022



Exhibitions and projects 2021-2022 season

The Van Abbemuseum begins the new season of culture with a high point: *Delinking and Relinking* opens on Saturday 18 September. The culmination of over two years of work, the exhibition represents the first fully multi-sensory collection display in the Netherlands. Below an overview of the exhibitions and projects that the Van Abbemuseum has in store for the coming year.

Delinking and Relinking in the Van Abbemuseum Collection

18 Sep 2021 - 2024

Delinking and Relinking in the Van Abbemuseum Collection invites visitors to experience art differently. Sometimes in the literal sense, by touching, smelling or listening to it; other times metaphorically, by giving expression to different, lesser known or previously unheard voices. Mostly inspiring and perhaps occasionally confrontational, *Delinking and Relinking* reveals to visitors how artists from 1900 to the present day respond to different cultures and perspectives. It explores how they tackle the big questions of their era, and how their artworks relate directly to what they see, feel and experience happening around them. Featuring 120 works of art, the exhibition spans all five floors of the museum's collection wing. More than 25 multi-sensory tools, including scent interpretations, tactile drawings and soundscapes enhance the art experience for all, whilst making the exhibition accessible to visually- or hearing-impaired visitors and wheelchair users. In February 2022, the exhibition will be expanded with, among others, a display dedicated to the work of René Daniëls. [Read full press release.](#)

Sponsored by VriendenLoterij, Creative Europe Programme of the European Union, Stichting Promotors, Mondriaan Fonds and Gemeente Eindhoven.



TEMPORARY EXHIBITIONS

Geo-Design: Budget Airlines

9 Oct - 14 Nov 2021 • runs during [Dutch Design Week 2021](#)

The Van Abbemuseum and Design Academy Eindhoven (DAE) will be working together once again for this year's Dutch Design Week on a display entitled *Geo-Design*. This edition focuses on budget airlines and the worldwide impact thereof on humans, the environment, politics and the social climate. Over the past three decades, the airline industry has undergone dramatic change as a result of the tactics and mechanisms behind these low-cost carriers. As in previous editions, an open call went out to DAE alumni to explore an aspect of this issue and submit a research proposal on that topic. The chosen entrants had three months during which to carry out their research, design and present their conclusions. Projects in the *Geo-Design* series are based on current global issues and sit at the intersection of scientific research, journalism, conceptualisation and design.

Parallel Lives, Parallel Aesthetics: León Ferrari & Gülsün Karamustafa

27 Nov 2021 - 13 Mar 2022

Parallel Lives, Parallel Aesthetics at the Van Abbemuseum offers two artists from beyond Europe - who have more than earned their spurs elsewhere - their first stand-alone solo exhibition in the Netherlands. A comprehensive retrospective spanning the life of León Ferrari (1920 – 2013, Buenos Aires) is paired with a full overview of the work of Gülsün Karamustafa (1946, Ankara). Karamustafa is considered one of the most important 20th century artists to come out of Turkey, where her work has been highly influential on younger generations of artists. The work and lives of León Ferrari and Gülsün Karamustafa converge and intersect on multiple levels. Both respond to authoritarian governments that do not support freedom of speech: a situation characteristic of the issues facing many countries today, including in Europe. As well as parallels, there are also differences between the artists. Karamustafa reflects on male-female relations in a changing Turkey, and the loss of Istanbul's multicultural climate; Ferrari responds to the influence of Western, Christian civilization on South America and on dictatorship in Argentina. The exhibition includes never-before-seen pieces by Ferrari. Karamustafa will be producing new work especially for this solo exhibition. The exhibition is a joint collaboration between the Museo Nacional Centro de Arte Reina Sofia in Madrid, the Centre Pompidou in Paris (León Ferrari) and Lunds konsthall in Lund (Gülsün Karamustafa). Sponsored by Ammodo, the Turing Foundation and the SAHA Association.

A Lasting Truth Is Change

2 Apr - 24 Jul 2022

The Coronavirus epidemic has had a huge impact on our lives. After a period of acute crisis follows reflection and call for change. Based on the notion that art institutions can play a role in this, curator, Yolande Zola Zoli van der Heide presents her first major exhibition at the Van Abbemuseum: *A Lasting Truth Is Change*. Some 80 artworks taken from the museum's collection will be displayed, exploring a number of pressing themes such as emancipation, equality and justice. The exhibition poses the question, what is missing from the stories around the works in the collection? By the same token, it references the pieces that are absent in the story of contemporary art, and the conditions for including those individuals who were excluded in the past. This absence is questioned through, among others, loaned works by artists who have previously exhibited at the Van Abbemuseum but whose work was not purchased. With a playful configuration, this experimental exhibition breaks down standard notions of how art should be presented. Little to no knowledge of art is required. Children are most welcome and indeed, play a pivotal role.



Victor Sonna. 1525

Runs until 9 January 2022

In 2015 in New Orleans, the Eindhoven-based artist, Victor Sonna (1977, Cameroon) purchased the chains of an enslaved person. This led the artist on a personal journey of discovery through, among others, Ghana and Suriname: places of significance for the transatlantic slave trade. Sonna explored and examined, incorporating his findings into a spectacular installation stretching 25 metres in height. Through 6 short films, 52 silkscreen prints and 152 tapestries, the artist sheds light on various aspects of the theme of slavery in a truly unique way. Sponsored by the Mondriaan Fonds and VriendenLoterij and part of the Musea Bekennen Kleur (museums confess color) collaborative.

PROJECTS

Marcel van den Berg and Erwin Thomasse

18 Sep 2021 - 3 April 2022

The new collection display *Delinking and Relinking* includes scope for a series of shorter projects. The museum invites artists whose work features in the Van Abbemuseum collection to reflect on the collection itself from their own standpoint or perspective. The first guests in this series are Marcel van den Berg (1978, Alphen aan de Rijn) and Erwin Thomasse (1972, Eindhoven). The two became acquainted through their involvement in the worlds of hip-hop and urban culture. In this small scale exhibition, they present new original pieces as part of a dialogue with other items in the museum collection.

Here, Here! Crowel & Fernhout

16 Oct - 14 Nov 2021 • runs during Dutch Design Week 2021

The graphic designer, Wim Crowel produced posters for the Van Abbemuseum for many years. He was a master of free yet precise graphic interpretation of artworks. One of the highlights is the poster he created for painter, Edgar Fernhout in 1963. It is this poster that design agency, Thonik took as inspiration for the new Dutch Design Week brand identity, being launched this year. Working with agency, The Foundry Types, Thonik expanded on the 13 letters on the poster to produce an entire font of its own. The new Crowel alphabet will be displayed alongside work by Fernhout, The Foundry Types and Thonik.

Eimear Walshe: Cuckquean

16 Oct 2021 - 27 Mar 2022

A large-scale sculpture of a cuckoo will be installed on the ground of the Eye (the museum's open-air gallery). The glass wall will be adorned with drawings and texts depicting a dove, a duck and a cuckoo. To Walshe, these birds represent non-standard behaviour with reference to sexuality and rearing. The installation follows on from the project entitled *The Department of Sexual Revolution Studies*, created by artist Eimear Walshe (1992, Ireland) at the Van Abbemuseum back in 2018. The project explored how modern-day forms of sexuality can help us better understand the relationship between sexuality and today's society, which extends to the realms of policy-making, accommodation and technology.

Theodora Niemeijer Prize winner

9 Apr - 9 Oct 2022

The winner of the 2021 Theodora Niemeijer Prize will be announced on 27 September. This bi-annual prize for emerging Dutch female artists consists of a monetary prize of €10,000 for a project to be installed in the Van Abbemuseum's open-air studio, the Eye. This year's competition saw 111 entries, each demonstrating huge social commitment on the part of the candidates. A judging panel led by former Dutch culture minister Hedy d'Ancona selected three projects for nomination.

Artist duo, Razia Barsatie (Paramaribo, 1982) and Marjet Zwaans (Groningen, 1988) hope to strengthen the position of the female Surinamese artists by means of an online programme and collective studio at the Oog. Silvia Martes's (Eindhoven, 1985) proposal addresses the conflict between isolation and exposure highlighted by the Coronavirus epidemic in the form of a glass house. Buhlebezwé Siwani (Johannesburg, 1987) references the history of colonialism and apartheid and the resulting socio-economic situation in South Africa. Her idea is to build two cities stacked one on top of the other made from green South African Ploom soap: one in a typically Dutch architectural style and the other in a typically Cape Dutch style. The soap will gradually dissolve over time. In collaboration with the Stichting Niemeijer Fonds

Supported by



NOTE FOR EDITORS

For enquiries and images:
Neeltje van Gool, Press Office
M: +31 (0)6 1299 5794
E: pressoffice@vanabbemuseum.nl

Images (left to right, top to bottom): Mercedes Azpilicueta, *The Captive: Here's a Heart for Every Fate*, 2019, collectie Van Abbemuseum Eindhoven. Met steun van de BankGiro Loterij. Foto: Peter Cox | Pablo Picasso, *Buste de Femme*, 1943, collectie Van Abbemuseum Eindhoven. Foto: Peter Cox | Foto: Marcel de Buck | Foto: Bram Saeys | Gülsün Karamustafa, *The Students*, 1978, collectie Gülsün Karamustafa | Pauline Boudry en Renate Lorenz, *Moving Backwards*, 2019, filmstill | Zaaloverzicht tentoonstelling 'The Kind Cruelty. 100 jaar León Ferrari in Museum Reina Sofia', december 2020. Foto: Joaquín Cortés Román Lores. Fotografisch archief Museum Reina Sofia | Wilfredo Lam, *Le Marchand d'Oiseaux*, 1962, collectie Van Abbemuseum Eindhoven. Foto: Peter Cox | Ossip Zadkine, *Saint Sébastien*, 1929, collectie Van Abbemuseum Eindhoven. Foto: Peter Cox | Marc Chagall, *Hommage à Apollinaire*, 1913, collectie Van Abbemuseum Eindhoven. Met steun van Verening Rembrandt. Foto: Peter Cox | Gülsün Karamustafa, *Icons – Turkey 1980 Military Coup d'État*, 1979-1980, Collectie Van Abbemuseum Eindhoven. Met steun van Mondriaanfonds. Foto: Peter Cox.

Visiting address

Stratumseind 2, Eindhoven
The Netherlands

Opening hours

Tuesday to Sunday 11am - 5pm.
The museum is closed on New Year's Day, King's Day and Christmas Day.



Admission

€13 Adults
€6 Students, CJP card holders
Free Children aged up to 12, holders of a Museumkaart,
BankGiro Loterij VIP card & every Tuesday afternoon after 3pm.

Book tickets online
vanabbemuseum.nl/tickets

Het Van Abbemuseum wordt onder andere ondersteund door / is supported by:



[Meld je aan voor Persberichten](#)

Deze e-mailing is verzorgd met MailingLijst